

## To Rent:

Cartington Terrace – Heaton – NE6 5SJ

4 bedroom maisonette

£1040 pcm (£260pppm/£60pppw)

Available 1<sup>st</sup> August



## Property Description

**Fantastic 4 bedroom maisonette in the heart of Heaton and just off the popular high street of Chillingham Road, with an additional and extremely rare 2nd reception room.**

A well presented property recently fully refurbished with new kitchen, 2 new bathrooms and new carpets fitted throughout.

Benefits include 2 separate bathrooms (large bath and walk-in double shower), a well designed kitchen including washing machine/tumble drier and a private rear yard. This property also benefits from 2 separate reception rooms (a large lounge and an additional dinning room/2nd lounge).

This property would suit both professionals or students looking for a larger than normal upmarket property.

To view a digital copy of this brochure, please go to [www.itsinthecloud.co.uk/cartington](http://www.itsinthecloud.co.uk/cartington)

### Bedrooms

4 bedrooms all with double beds, extra large wardrobes, set of drawers, desks with chairs and full length mirrors.

### Living Room

Spacious and airy living room with triple and double leather sofas and coffee tables.

### Dinning Room/2<sup>nd</sup> Lounge

Second reception room with 6 seater dinning table and chairs, as well as leather sofas.

### Kitchen

Well designed and equipped kitchen, including washing machine/tumble drier, a large fridge freezer, as well as an additional 2<sup>nd</sup> fridge.

### Bathrooms

2 separate bathrooms including walk-in double shower as well as an extra large and deep luxurious bath.

### Externals

Private rear yard with external storage in outhouse and under-stairs cupboard.

## Property Features

- ✓ 4 bedrooms - 2 bathrooms
- ✓ 2 reception rooms
- ✓ Separate lounge and dinning room
- ✓ Recently fully refurbished
- ✓ New kitchen and bathrooms
- ✓ Fully furnished to a high standard
- ✓ New carpets and decoration
- ✓ Downstairs bathroom with walk-in double shower
- ✓ Upstairs bathroom with extra large and deep luxurious bath
- ✓ Private rear yard
- ✓ Great location
- ✓ Fantastic transport links

## The local area

Situated in the heart of Heaton and just off the popular high street of Chillingham Road. This is a fantastic location with great amenities right on the doorstep.

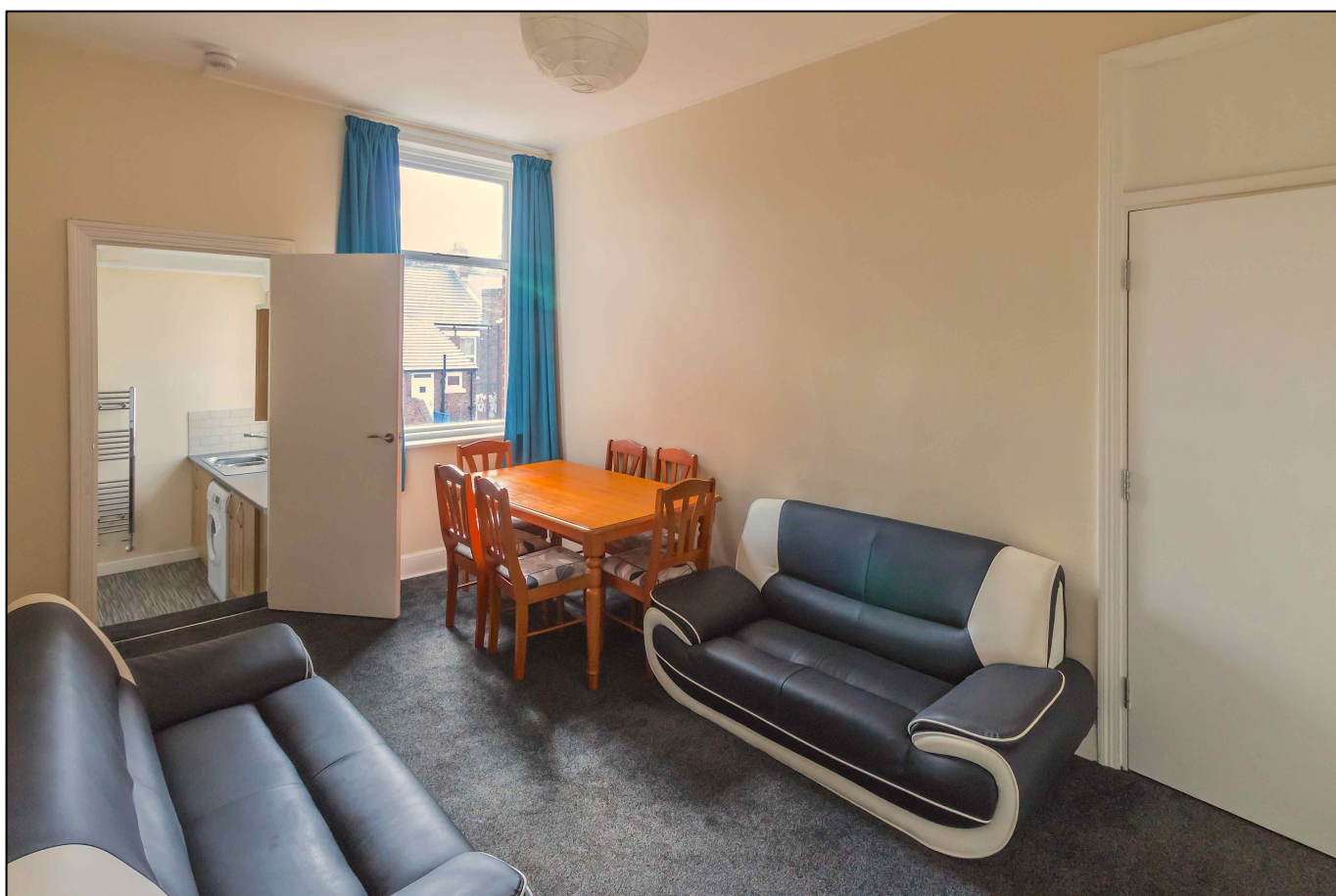
There is a vast array of shops, restaurants and take-aways, as well as the best transport links possible. Close to both Newcastle and Northumbria universities as well as hospitals, schools and Newcastle city centre.



## Lounge



## Dinning Room / 2<sup>nd</sup> Lounge





## Kitchen



## Bedroom 1





Bedroom 2



Bedroom 2





**Bedroom 3**



**Bedroom 4**



## Bathroom



## Shower Room

