

## To Rent:

Simonside Terrace – Heaton – NE6 5DR

5 bedroom maisonette

£1,300 pcm (£260pppm/£60pppw)

Available 1<sup>st</sup> August



## Property Description

**5 bedroom spacious maisonette in the heart of Heaton and just off the popular high street of Chillingham Road.**

Recently fully refurbished with new kitchen, 2 new bathrooms, new carpets, new furnishings, new central heating system, new windows and doors, fully re-plastered and re-decorated. This is a high quality property and it really needs viewed in person to be fully appreciated.

Benefits include new wall mounted 50" 4K TV, Bosch dishwasher, Bosch washing machine, energy efficient Baxi boiler and a large rear yard with off street parking.

This property would suit both professionals or students looking for a high quality upmarket property.

To view a digital copy of this brochure, please go to [www.itsinthecloud.co.uk/simonside](http://www.itsinthecloud.co.uk/simonside)

## Bedrooms

5 bedrooms all with double beds, extra large wardrobes, set of drawers, desks with chairs and full length mirrors.

## Living Room

Spacious and airy living room with 50" 4K TV, triple and double leather sofas as well as full height storage cupboards.

## Kitchen

Well designed and equipped kitchen with top of the range appliances. Benefiting from new Bosch dishwasher and Bosch washing machine, double oven with ceramic hob and extra large fridge freezer.

## Bathroom

2 separate bathrooms - Consisting of fully equipped shower room as well as bathroom with extra large and deep bath.

## Externals

Large rear yard with ample space and secure bike rack for many bikes. Additional benefits include double rear gates that provide rare off street parking for car or vehicle.

## Property Features

- ✓ 5 bedrooms - 2 bathrooms
- ✓ Recently fully refurbished
- ✓ New kitchen and bathrooms
- ✓ Fully furnished to a high standard
- ✓ New carpets and decoration
- ✓ Wall mounted 50" 4K TV
- ✓ Bosch dishwasher & washing machine
- ✓ Downstairs bathroom with shower
- ✓ Upstairs bathroom with extra large bath
- ✓ Large rear yard with off street parking
- ✓ Secure bike stand for many bikes
- ✓ New energy efficient gas central heating
- ✓ New energy efficient double glazing
- ✓ Great location and transport links

## The local area

Situated in the heart of Heaton and just off the popular high street of Chillingham Road. This is a fantastic location with great amenities right on the doorstep.

There is a vast array of shops, restaurants and take-aways, as well as the best transport links possible. Close to both Newcastle and Northumbria universities as well as hospitals, schools and Newcastle City Centre.



Lounge



Lounge





Kitchen



Kitchen

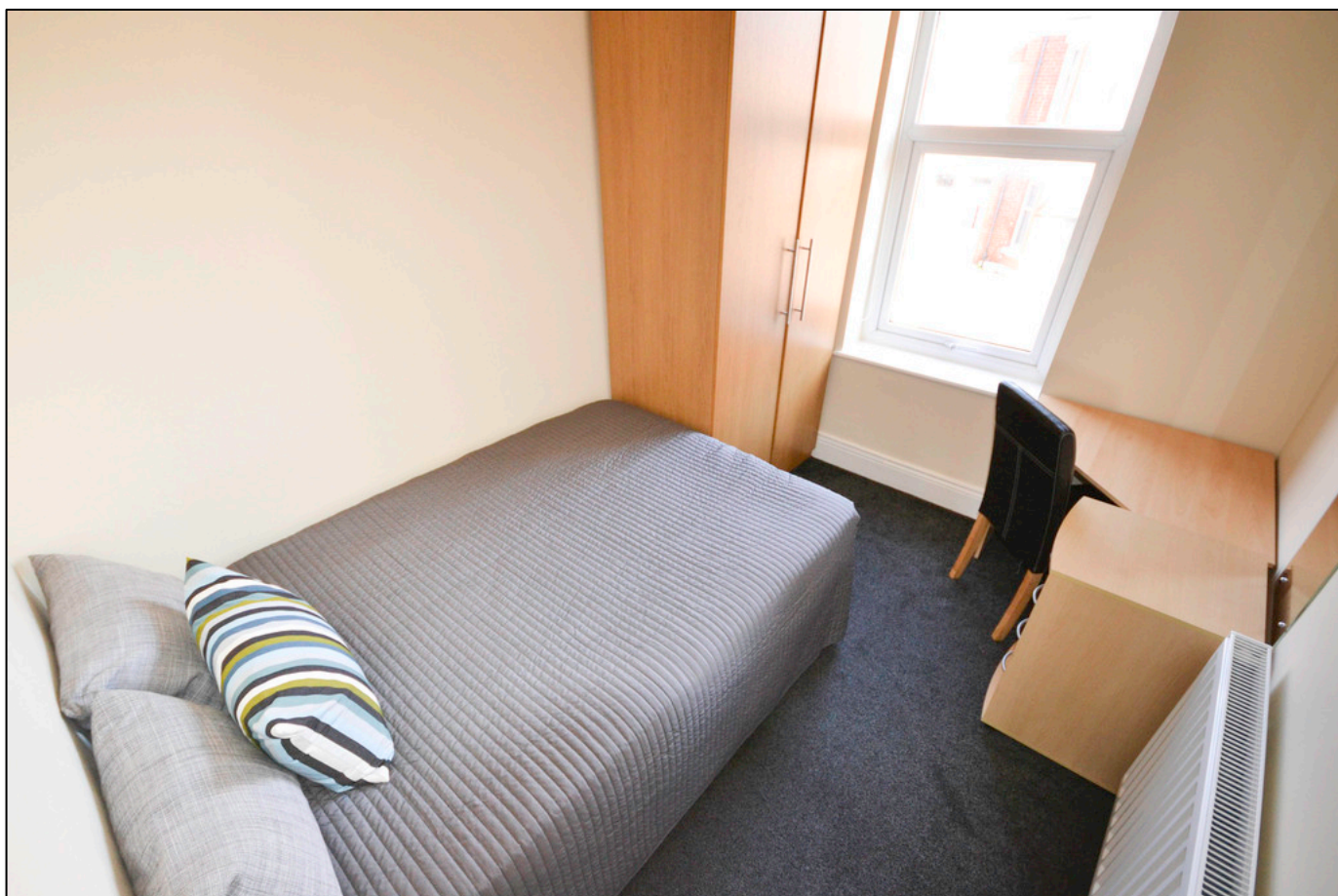




Bedroom 1



Bedroom 2

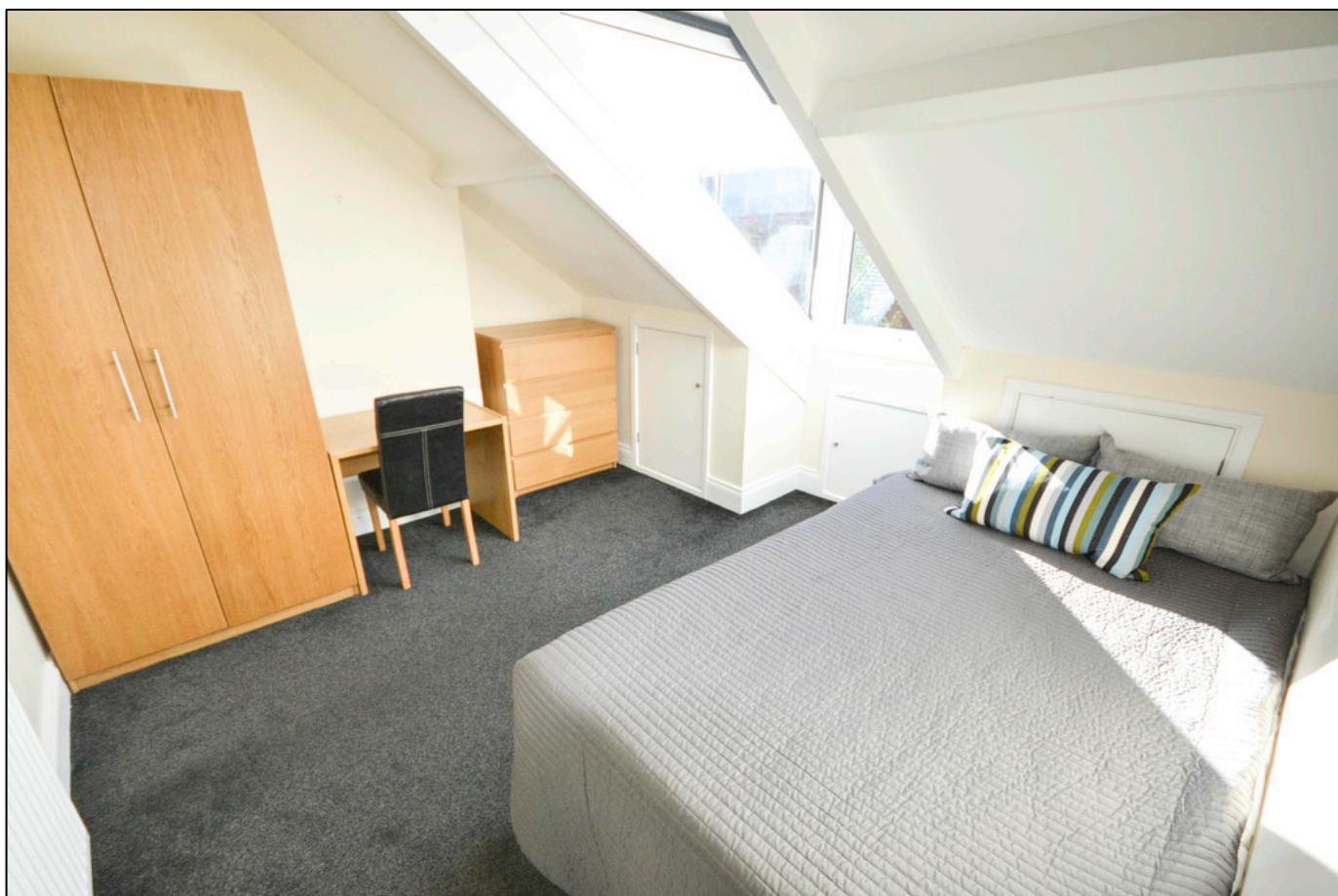




Bedroom 3



Bedroom 4





Bedroom 5



Bedroom 5





Bathroom



Shower Room

